

## OVERVIEW

- All vertical ribs should be set slightly back from the horizontal ribs so they will not interfere in the forming of the material.
- Econokore's Face may be covered using a wide variety of materials including laminates, veneers, metals, leathers, and other semi rigid materials.

## PRO TIP:

Use a vertical grade HPL. A horizontal grade HPL can be used, provided it will bend to the desired radius.

For a more indepth guide, check out our Video Tutorial:



## Let's get started!



Clean the surfaces by removing all dust and debris.



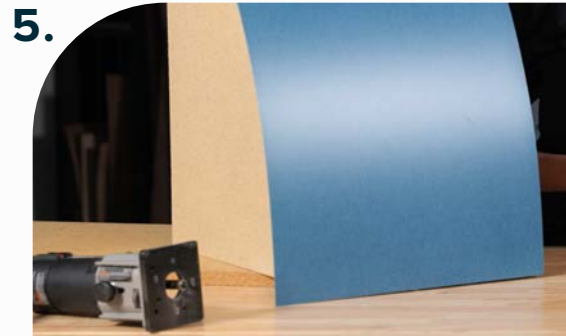
Apply contact adhesive to both the decorative surface and Econokore substrate.



Attach decorative surface material to component.



Use a J-Roller to ensure uniform adhesion.



Use a router to remove excess face material from edges.



Results.

**Congratulations!** Your project is complete, but this is just the beginning of opportunities with our Kerfkore products.

[LEARN ABOUT ECONOKORE](#)

[DO'S & DON'TS](#)

[REQUEST A SAMPLE](#)

[ECONOKORE SPEC SHEET](#)